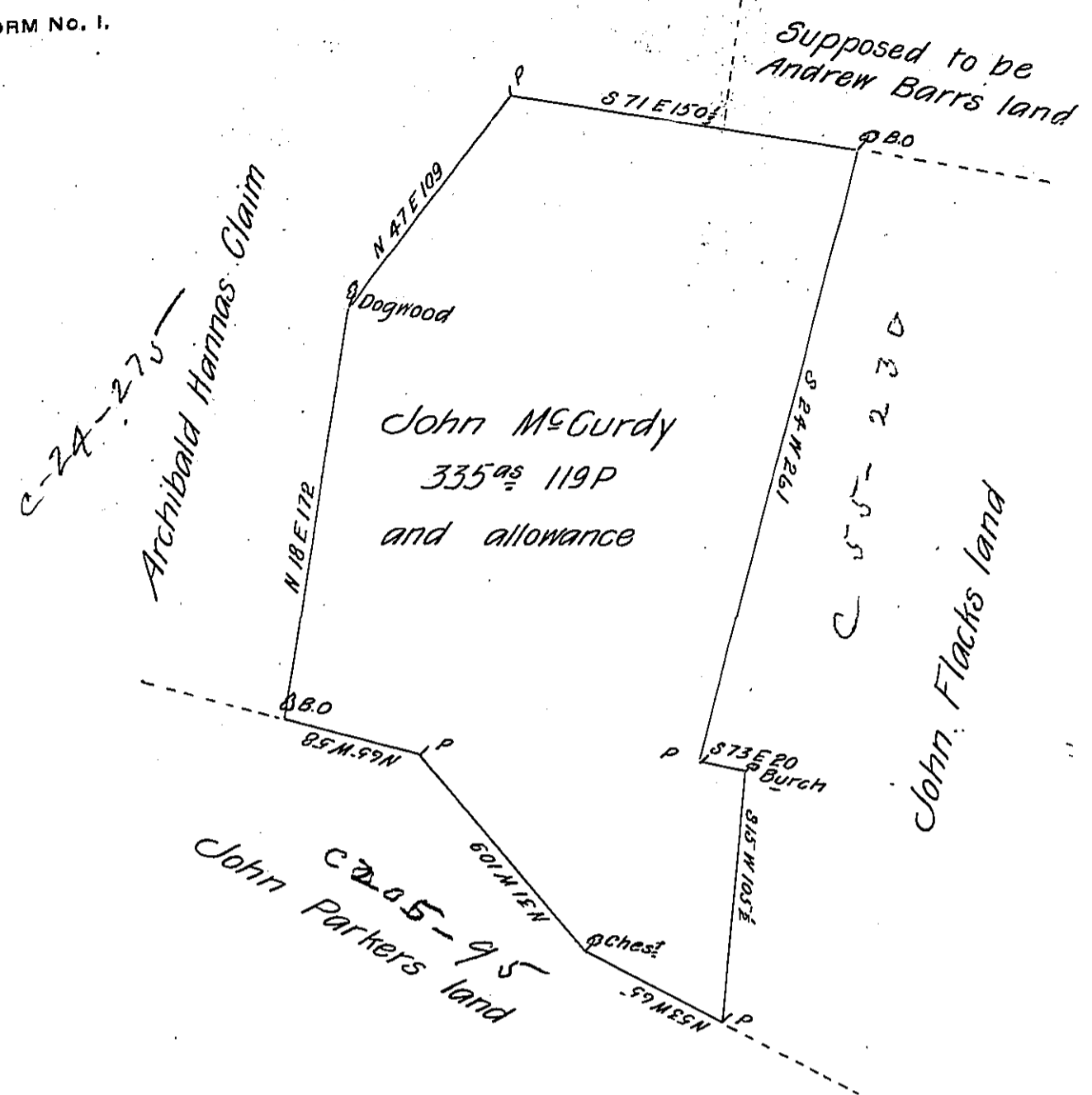


FORM No. 1.



A draught of a tract of land situate in Fairfield township in the County of Westmoreland containing three hundred and thirty five acres and 119 P with an allowance of six P. Cent. Surveyd on the 9<sup>th</sup> day of April 1787 to John McGurdy on his Warrant dated Dec<sup>r</sup> 20<sup>th</sup> 1786 by John Moore then Deputy Surveyor taken from his draught of the same now in my office which I have examined and find correct. Certified Sept<sup>r</sup> 4<sup>th</sup> 1821

P- Isaac Moore D.S.

Samuel Cochran Esquire.  
 Sur<sup>r</sup> Gen<sup>l</sup> of Penn<sup>a</sup>

IN TESTIMONY that the above is a copy of the original remaining on file in the Department of Internal Affairs of Pennsylvania, made conformably to an Act of Assembly approved the 16th day of February, 1833, I have hereunto set my Hand and caused the Seal of said Department to be affixed at Harrisburg, this twenty second day of January 1906

*Isaac P. Rowley*  
 Secretary of Internal Affairs.